

Southern Arizona



Odyssey of the Mind®

Regional Tournament



March 4, 2017 | Canyon del Oro High School

Hosted by:



Discover Amphi

→ *Excellence in Education*

www.amphi.com





Acknowledgements

GOVERNING BOARD

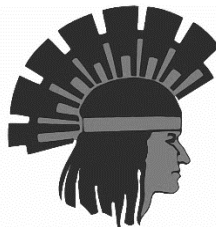
Jo Grant, President
Deanna M. Day, M.Ed., Vice President
Scott K. Baker, Ph.D.
Vicki Cox Golder
Scott A. Leska

DISTRICT ADMINISTRATION

Patrick Nelson, Superintendent
Monica Nelson, Associate Superintendent, School Operations
Scott Little, Chief Financial Officer

CANYON DEL ORO HIGH SCHOOL ADMINISTRATION

Paul DeWeerd, Principal
Don Enright, Assistant Principal
Patsy Harris, Assistant Principal
Brice Menaugh, Assistant Principal





ARIZONA ODYSSEY OF THE MIND ASSOCIATION

Deanna M. Day, Association Director

Thank You

Superintendent Patrick Nelson

16 Odyssey Years

75 Amphi World Finals Teams

609 Amphi Teams

3,645 Grateful Amphi OMERS (and their families)

More thanks to these Canyon del Oro HS Student Volunteers

International Baccalaureate

JROTC

National Honor Society

Honors Internship

Tournament Officials

Texana Sonnefeld – Regional Director

Problem Captains:

Problem 1 – Vicki Cox Golder

Problem 2 – Peggy Bennett

Problem 3 – Terri Korman

Problem 4 – Cymry DeBoucher

Problem 5 – Roseanne Lopez

Primary – Shyla Wells

Spontaneous – Kathryn Hilton



Problem 1: Catch Us If You Can



This is your Odyssey, should you choose to accept it! Your team will design, build, and run vehicles from a multi-level Parking Garage to a secret meeting place without being stopped. Vehicles will travel different routes to reach the same destination. During their Odyssey, the vehicles will do something that prevents them from being followed. The performance will include the reason for the meeting, someone that wants to prevent the meeting, a simulation of a scene taking place inside a vehicle as it travels, and a soundtrack to accompany the vehicles travel.

Schedule for *Catch Us If You Can*

Catch Us If You Can Div I - Big Gym - Follow Red Signs

Long Term	Number	Membership	Spont
1:00 p.m.	28236	SATORI SCHOOL A	9:20 a.m.
1:20 p.m.	35570	PAINTED SKY ELE SCH	9:40 a.m.
1:40 p.m.	36570	PICTURE ROCKS ELE SCH	10:00 a.m.
2:00 p.m.	43062	RATTLESNAKE RIDGE ELE SCH A	10:20 a.m.
2:20 p.m.	25386	DONALDSON ELE SCH	10:40 a.m.

Catch Us If You Can Div II - Big Gym - Follow Red Signs

Long Term	Number	Membership	Spont
9:00 a.m.	25858	WILSON K-8 SCH A	11:00 a.m.
9:20 a.m.	30934	WILSON K-8 SCH B	11:20 a.m.
9:40 a.m.	36570	PICTURE ROCKS ELE SCH	11:40 a.m.
10:00 a.m.	479	AMPHITHEATER MID SCH	1:00 p.m.
10:20 a.m.	5412	CORONADO K-8 SCH A	1:20 p.m.
10:40 a.m.	45058	MANZANITA COMM SCHS	2:00 p.m.
11:00 a.m.	11901	MAGEE MID SCH	1:40 p.m.

Catch Us If You Can Div III - Big Gym - Follow Red Signs

Long Term	Number	Membership	Spont
11:20 a.m.	32348	ORO VALLEY ROTARY	9:00 a.m.



Problem 2: Odd-a-Bot

For this problem, teams will create a humorous story about a family that brings home an Odd-a-Bot. Instead of being programmed to perform tasks, this Odd-a-Bot robot learns from watching others. Teams will design, build, and operate an original robot that demonstrates human characteristics when performing tasks. In the performance, the Odd-a-Bot will move and learn human actions from watching characters perform activities such as household chores, creating art, and dancing. The Odd-a-Bot learns more than it was expected to learn, and will confuse its actions with humorous results.

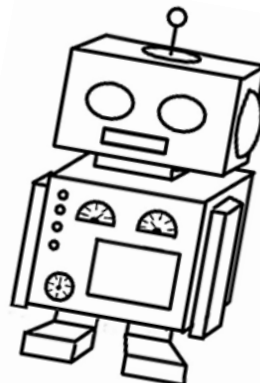
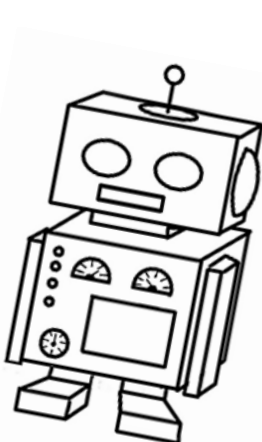
Schedule for *Odd-a-Bot*

Odd-a-Bot Div I - Fine Arts Little Theater - Follow Purple Signs

Long Term	Number	Membership	Spont
9:00 a.m.	4907	HELEN KEELING ELE SCH	10:20 a.m.
9:20 a.m.	8698	MESA VERDE ELE SCH	10:40 a.m.
9:40 a.m.	17227	MANZANITA ELE SCH	11:00 a.m.
10:00 a.m.	25386	DONALDSON ELE SCH	11:20 a.m.
10:20 a.m.	43062	RATTLESNAKE RIDGE ELE SCH A	11:40 a.m.
10:40 a.m.	44811	FRIENDS OF ORO VALLEY LIBRARY	12:00 p.m.

Odd-a-Bot Div II - Fine Arts Little Theater - Follow Purple Signs

Long Term	Number	Membership	Spont
11:00 a.m.	9691	LA CIMA MID SCH	9:00 a.m.
11:20 a.m.	479	AMPHITHEATER MID SCH	9:20 a.m.
11:40 a.m.	5412	CORONADO K-8 SCH A	9:40 a.m.
12:00 p.m.	11901	MAGEE MID SCH	10:00 a.m.





Problem 3: It's Time, OMER



The future and the past collide in this problem about important works of art both existing and yet-to-be-created. Teams will create and present an original performance about time travelers looking to discover the inspiration for great works of art, little did they know it was OMER every time! The travelers go back in time; twice into our past and once into our future. They will see OMER inspire two classical artists and a team-created artist from our future. The performance will include how the three works of art positively impact the world, a visual and audible effect that indicates when time travel is occurring, two re-creations of the classic works of art selected from a list, and a team-created work of art.

Schedule for *It's Time, OMER*

It's Time, OMER Div I - Fine Arts Auditorium - Follow Yellow Signs

Long Term	Number	Membership	Spont
9:00 a.m.	17227	MANZANITA ELE SCH	1:20 p.m.
9:20 a.m.	30574	PRINCE ELE SCH	1:40 p.m.
9:40 a.m.	35570	PAINTED SKY ELE SCH	2:00 p.m.
10:00 a.m.	36666	COYOTE TRAIL ELE SCH	2:20 p.m.
10:20 a.m.	43063	RATTLESNAKE RIDGE ELE SCH B	2:40 p.m.
10:40 a.m.	63	COPPER CREEK ELE SCH	12:40 p.m.
11:00 a.m.	4907	HELEN KEELING ELE SCH	1:00 p.m.

It's Time, OMER Div II - Fine Arts Auditorium - Follow Yellow Signs

Long Term	Number	Membership	Spont
1:20 p.m.	38354	CORONADO K-8 SCH B	9:00 a.m.
1:40 p.m.	43062	RATTLESNAKE RIDGE ELE SCH A	9:20 a.m.
2:00 p.m.	43913	QUEST FOR EDUCATION AND ARTS	9:40 a.m.
2:20 p.m.	5412	CORONADO K-8 SCH A	10:00 a.m.
2:40 p.m.	9691	LA CIMA MID SCH	10:20 a.m.
3:00 p.m.	11901	MAGEE MID SCH	10:40 a.m.
3:20 p.m.	25858	WILSON K-8 SCH A	8:40 a.m.
3:40 p.m.	16142	CROSS MID SCH A	11:00 a.m.

It's Time, OMER Div III - Fine Arts Auditorium - Follow Yellow Signs

Long Term	Number	Membership	Spont
11:20 a.m.	3244	CANYON DEL ORO H S	3:00 p.m.
11:40 a.m.	44438	IRONWOOD RIDGE H S	3:20 p.m.



Problem 4: Ready, Set, Balsa, Build!

Creativity can be defined by using only what you have to get a job done. In this problem, teams will design, build, and test a structure made of only balsa wood and glue that will balance and support as much weight as possible. The structure must include sets of balsa pieces of predetermined sizes and quantities as listed in the problem. Some sets must be parts of the structure while others, if incorporated, will receive additional score - the more sets of pieces used, the higher the score! Teams will present a performance with a theme about using what's available and that incorporates weight-placement and assembling original team creations.

Schedule for *Ready, Set, Balsa, Build!*

Ready, Set, Balsa, Build! - Div I - North Gym - Follow Green Signs

Long Term	Number	Membership	Spont
9:00 a.m.	8698	MESA VERDE ELE SCH	1:00 p.m.
9:20 a.m.	9943	IRONWOOD ELE SCH	1:20 p.m.
9:40 a.m.	25875	HARELSON ELE SCH	1:40 p.m.
10:00 a.m.	35570	PAINTED SKY ELE SCH	2:00 p.m.
10:20 a.m.	36570	PICTURE ROCKS ELE SCH	2:20 p.m.
10:40 a.m.	5412	CORONADO K-8 SCH A	12:40 p.m.
11:00 a.m.	43062	RATTLESNAKE RIDGE ELE SCH A	2:40 p.m.

Ready, Set, Balsa, Build! - Div II - North Gym - Follow Green Signs

Long Term	Number	Membership	Spont
1:00 p.m.	11901	MAGEE MID SCH	9:00 a.m.
1:20 p.m.	16142	CROSS MID SCH A	10:40 a.m.
1:40 p.m.	35818	CROSS MID SCH B	11:00 a.m.
2:00 p.m.	25858	WILSON K-8 SCH A	10:00 a.m.
2:20 p.m.	479	AMPHITHEATER MID SCH	10:20 a.m.
2:40 p.m.	6069	CROSS MID SCH C	9:20 a.m.
3:00 p.m.	9691	LA CIMA MID SCH	9:40 a.m.

Ready, Set, Balsa, Build! - Div III - North Gym - Follow Green Signs

Long Term	Number	Membership	Spont
11:20 a.m.	36828	SABINO H S	3:20 p.m.

Problem 5: To Be Continued: A Superhero Cliffhanger

Creativity is being taken away from the world, and it is up to Odyssey teams to rescue it! Teams will create and present a humorous performance about an unexpected superhero that encounters three different situations where it must save creativity in some way. The superhero will change appearance when it displays its superpowers and go back to blending in with society when not. The performance will also include a clumsy sidekick, a nemesis character, a choreographed battle, and a cliffhanger ending.

Schedule for *To Be Continued: A Superhero Cliffhanger*

To Be Continued: A Superhero Cliffhanger Div 1 - Fine Arts Chorus Room Follow Blue Signs

Long Term	Number	Membership	Spont
9:00 a.m.	31298	WALKER ELE SCH	11:20 a.m.
9:20 a.m.	33828	DESERT WILLOW ELE SCH	11:40 a.m.
9:40 a.m.	36570	PICTURE ROCKS ELE SCH	1:00 p.m.
10:20 a.m.	43062	RATTLESNAKE RIDGE ELE SCH A	1:40 p.m.
10:40 a.m.	43063	RATTLESNAKE RIDGE ELE SCH B	2:00 p.m.
11:00 a.m.	43913	QUEST FOR EDUCATION AND ARTS	2:20 p.m.
11:20 a.m.	36666	COYOTE TRAIL ELE SCH	2:40 p.m.
11:20 a.m.		--Lunch	
12:20 p.m.	4907	HELEN KEELING ELE SCH	9:00 a.m.
12:40 p.m.	5412	CORONADO K-8 SCH A	9:20 a.m.
1:00 p.m.	8698	MESA VERDE ELE SCH	9:40 a.m.
1:20 p.m.	17227	MANZANITA ELE SCH	10:00 a.m.
1:40 p.m.	25386	DONALDSON ELE SCH	10:20 a.m.
2:00 p.m.	25875	HARELSON ELE SCH	10:40 a.m.
2:20 p.m.	30574	PRINCE ELE SCH	11:00 a.m.



To Be Continued: A Superhero Cliffhanger Div II - Fine Arts Band

Follow Blue Signs

Long Term	Number	Membership	Spont
8:40 a.m.	11901	MAGEE MID SCH	11:20 a.m.
9:00 a.m.	16142	CROSS MID SCH A	11:40 a.m.
9:20 a.m.	25858	WILSON K-8 SCH A	1:00 p.m.
9:40 a.m.	35818	CROSS MID SCH B	1:20 p.m.
10:00 a.m.	36570	PICTURE ROCKS ELE SCH	1:40 p.m.
10:20 a.m.	36666	COYOTE TRAIL ELE SCH	2:00 p.m.
10:40 a.m.	38354	CORONADO K-8 SCH B	2:20 p.m.
11:00 a.m.	42162	LEGACY TRADITIONAL-NW TUCSON	9:00 a.m.
11:20 a.m.		--Lunch	
12:20 p.m.	44811	FRIENDS OF ORO VALLEY LIBRARY	9:20 a.m.
12:40 p.m.	9943	IRONWOOD ELE SCH	9:40 a.m.
1:00 p.m.	479	AMPHITHEATER MID SCH	10:00 a.m.
1:20 p.m.	5412	CORONADO K-8 SCH A	10:20 a.m.
1:40 p.m.	9691	LA CIMA MID SCH	10:40 a.m.



To Be Continued: A Superhero Cliffhanger Div III - Fine Arts Band

Follow Blue Signs

Long Term	Number	Membership	Spont
2:00 p.m.	44438	IRONWOOD RIDGE H S	8:20 a.m.
2:20 p.m.	3244	CANYON DEL ORO H S	8:40 a.m.



Problem 6: Movin' Out!

Teams will create and present a performance about a group that is moving out of one place and into another. In one scene, team-created props and scenery will make up the first setting. To transform into a new setting, team-made devices will move the scenery and props to a new location. Everything in the setting for the next scene must be made from the transported items. The performance will also include a humorous Moving Character, a reason for the move, and a lost item that is rediscovered in an unusual place.

Schedule for *Movin' Out!*

Movin' Out! Primary - Lecture Hall - Follow Orange Signs

Long Term	Number	Membership	Spont
9:00 a.m.	8698	MESA VERDE ELE SCH	11:00 a.m.
9:30 a.m.	28236	SATORI SCHOOL A	11:20 a.m.
10:00 a.m.	25875	HARELSON ELE SCH	2:00 p.m.
10:30 a.m.	33547	F O HOLAWAY ELE SCH	1:20 p.m.
11:00 a.m.	33828	DESERT WILLOW ELE SCH	1:40 p.m.
11:30 a.m.	31298	WALKER ELE SCH	1:00 p.m.
12:00 p.m.	36570	PICTURE ROCKS ELE SCH	2:20 p.m.
12:30 p.m.		--Lunch	
1:30 p.m.	36666	COYOTE TRAIL ELE SCH	9:00 a.m.
2:00 p.m.	43062	RATTLESNAKE RIDGE ELE SCH A	9:20 a.m.
2:30 p.m.	43063	RATTLESNAKE RIDGE ELE SCH B	9:40 a.m.
3:00 p.m.	8698002	MESA VERDE ELE SCH	10:00 a.m.
3:30 p.m.	31298002	WALKER ELE SCH	10:20 a.m.
4:00 p.m.	8698003	MESA VERDE ELE SCH	10:40 a.m.



To North
Campus

Problem 1 - Vehicles - Catch Us if You Can - Big gym - follow red signs
 Problem 2 - Technical - Odd-a-Bot - Fine Arts Little Theater - follow purple signs
 Problem 3 - Classics - It's Time, OMER - Fine Arts Auditorium - follow yellow signs
 Problem 4 - Structures - Ready, Set, Balsa, Build! - North Gym - follow green signs
 Problem 5 - Theatrical - To Be Continued: Superhero Cliffhanger - follow blue signs
 Primary Problem - Movin' Out - Lecture Hall - follow orange signs
 Spontaneous - Building F
 Registration, Odyssey concessions, food - MPR
 AWARDs - Audience may enter at 4:45 p.m.

Tennis Courts

Outside Basketball Courts

z 

Awards 5PM

Parking

Registration

NO PARKING Without Pass Campus Road

XXXXXXXXXXXXX No Parking - Drop Off Zone XXXXXXXXXXXXXXXXXXXXXXX

Calle Concordia

XXXXXX